

# HOW THE HOUSING ELEMENT IMPACTS YOU



## What is a Housing Element?

A Housing Element is a State-mandated policy document in which cities identify existing and future housing development opportunities to meet needs determined by the State. Every eight years, cities must realign their Housing Element with State requirements and the Regional Housing Needs Assessment (RHNA).



## What is a RHNA allocation and has Yorba Linda tried to appeal its assignment?

Based on the RHNA, the Southern California Association of Governments (SCAG) allocates an assigned number of housing units to individual jurisdictions within the region. For the 2021-2029 cycle, Yorba Linda was assigned 2,415 housing units. Importantly, the City does not build housing. The City's role is to create zoning that would theoretically allow that number of housing units to be built over the RHNA period; in this case, 2021 to 2029.

City staff, City Council, and individual residents have made efforts to lower Yorba Linda's RHNA obligation, but these were rejected by SCAG and the California Department of Housing and Community Development (HCD).

## What is the certification status of Yorba Linda's 2021-2029 Housing Element?

The City's new, resident-driven Housing Element outlines the zoning changes that align with these State-mandated goals while maintaining local control. The Housing Element is conditionally certified by the State, but requires a ballot vote by Yorba Linda residents in November for full certification.

## DID YOU KNOW?

The proposed zoning changes in the revised 2021-2029 Housing Element will only affect 1.75% of the total land area in all of Yorba Linda.



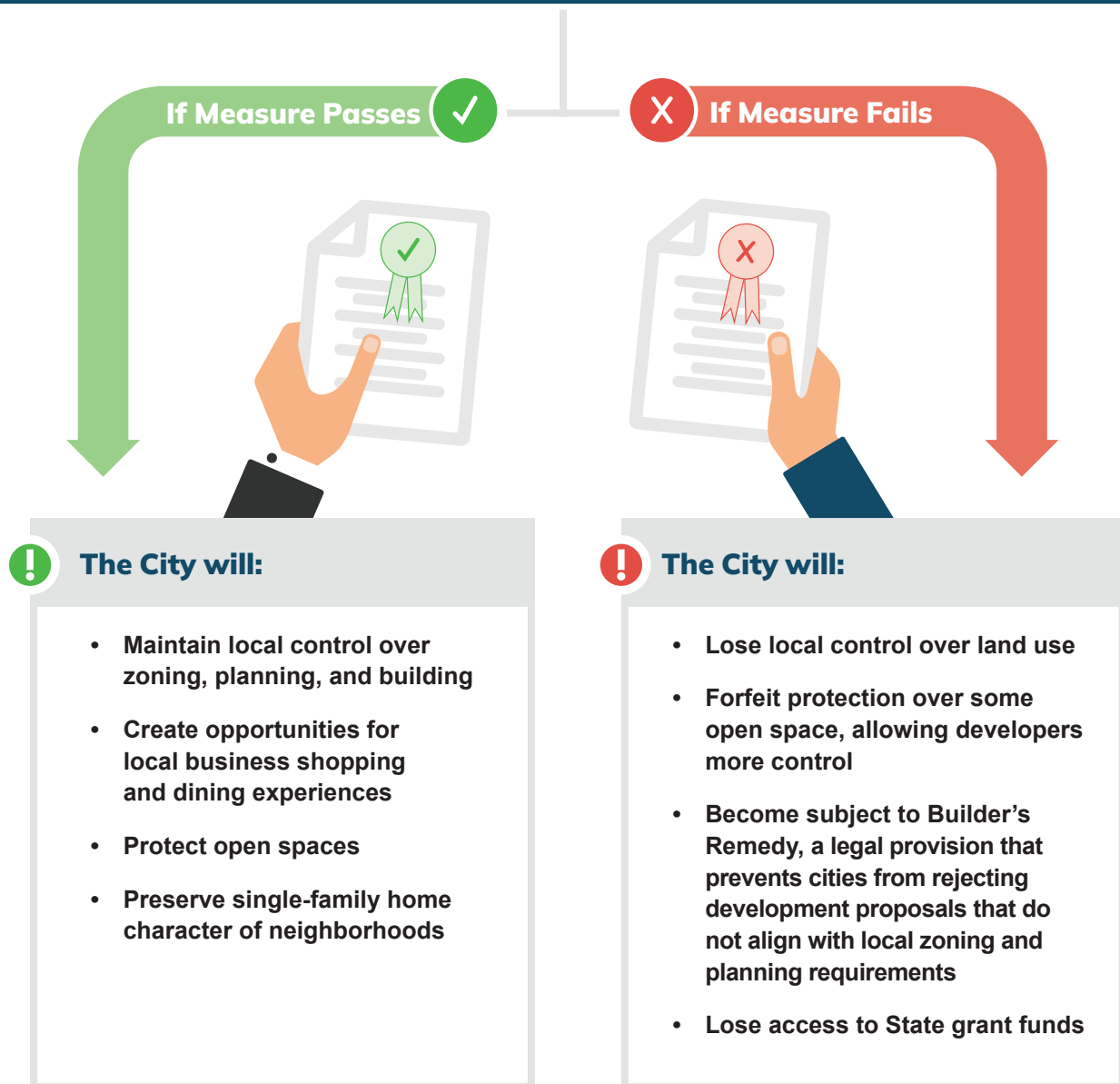
For resources and more information, visit [YLLocalControl.com](http://YLLocalControl.com)

# Impact of Upcoming Local Control Ballot Measure

Measure B, Yorba Linda's Right-to-Vote Amendment, empowers voters to approve or reject major adjustments to the City's land use documents. As the conditionally certified Housing Element requires zoning changes, Yorba Linda voters must approve these changes to maintain the Housing Element certification by the State by November 2024.



## How does the local control measure impact Yorba Linda?



For resources and more information, visit [YLLocalControl.com](https://YLLocalControl.com)